



RÖHNISCH

GOLF AUTUMN/WINTER 2023

Swedish Activewear for Women, by Women.

Röhnisch was first founded in 1945 by Hellmut Röhnisch, a German born entrepreneur who emigrated to Sweden in the 1930s. Hellmut won the Swedish gold medal in Gymnastics in 1945, the same year he founded Röhnisch as a supplier in Gymnastics equipment.

Since 2002, Röhnisch has focused on becoming one of the leading Activewear brands for Women, by Women. Our long history of product innovation and refined women's designs is what constantly keeps us in the forefront.

Röhnisch offers Activewear and Golfwear to women of all shapes and sizes, never compromising style for function and with sustainability at heart. As a female brand specialist with an all-female design team, we pride ourselves in making women feel confident, comfortable and strong.

R Ö H N I S C H

Autumn/Winter 2023

Our Autumn/Winter 2023 Golf collection is primarily designed with a focus on providing women, of all shapes and sizes, with contemporary and sustainable golfwear.

Comfort, look and function are combined with a focus on technical performance for outdoor activity crossover seasons. We constantly refine our designs and develop our products with the female specific anatomy, attributes and needs at center. Our main purpose is to make active women feel confident, comfortable, and strong.

In Autumn/Winter 2023 we are again taking steps in our sustainable movement and our goal to become 100% sustainable in 2025. 85% out of our golf collection is now made of sustainable sourced and recycled materials.

Color and Print card

The print and color card is designed for layering. Both minimalism and maximalism are represented and the selected mix of colors reflects a combination of sustainable durability, personality, and seasonal trend. Structures, color blocking and dopamine brights will give our staples a new seasonal look.

COLOR

Earthy dark brown and beige midtones sit alongside cyber yellow, strong pink and the smaller appeal of purple and aqua.

PRINT CARD

Personality along the classic freshness of checks and blocks is the centre of the graphic story. Our version of animal snake is inspired of the functionality and beauty of the natural world.





Golf Resort

The Resort pieces combine high performance materials with leisure inspired styles to create a modern and comfortable pre- autumn collection. A big focus lies on our appreciated UPF50+ material together with decorative flat knit details in contrasting color combinations. Colorful thin jersey sets with quick dry properties, subtle color blocking and bold Röhnisch logos gives a sporty yet sophisticated look.

Active Golf

The Active Golf collection focuses on functionality, comfort and layering to create an overall look which is sporty, minimalistic and technical. The new range consists of well-designed essentials which offer long-lasting appeal and will easily adapt from the golf course to an urban commute. The garments are designed for performance and protection and both cooling and uv effects are put directly into both the design and the chosen sustainable qualities.

85% of the golf collection consists of sustainably sourced and recycled materials, making it one of the leading in the field.





Modern Classics

Our Modern Classic range of garments is made for an outdoor active lifestyle and offers multifunctional products in a luxurious yet classic look. This Collection segment is inspired by a more classic Golf look and is offered in colors and prints which reflect longevity, creating a timeless and lasting core Golfing wardrobe.

The majority of products in the Modern Classics range are sustainable helping to focus on the company goal of 100% sustainable collections by 2025.

Accessories

For the AW 2023 Season we offer a wide assortment of accessories, each with the purpose to match your golfing and everyday active life. The Collection consists of practical designs and pieces which are developed to match your outfit and to fit your needs. Focusing on fewer key pieces we aim to make accessories which can stay with us for many seasons ahead

In addition 79% of our Accessories collection is now sustainable.





Court

The main focus for our Autumn/Winter 2023 Court Collection is to improve the performance and the experience on the court, combining a clean sophisticated color pallet with high performance materials for a sporty yet feminine look.

The Collection contains quick-dry jersey and classical 4-way stretch fabrics that enhance both mobility and Padel specific movements.

100 % of the court collection consists of sustainably sourced and recycled materials, making it one of the leading in the field.

Maternity

We want to encourage an active lifestyle and believe that you shouldn't have to compromise on comfort and function when being pregnant. Therefore we simply decided to launch some of our best-selling golf pieces in sustainable maternity options.

Lookbook⁰¹



111251 Hailey Polo
 111778 Avalon vest
 111682 Jess Yarndye Pants



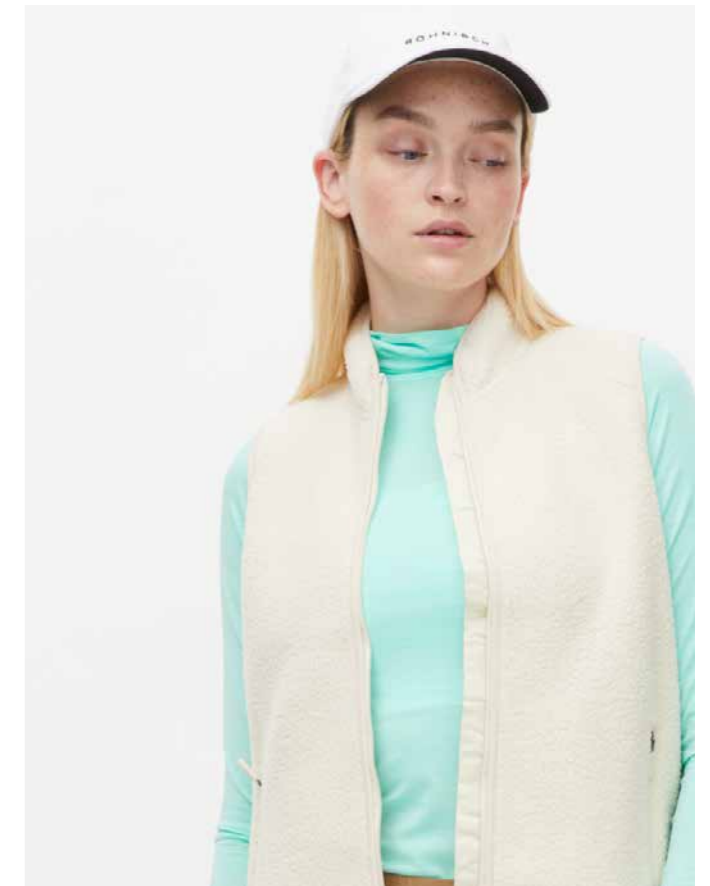
111251 Hailey Polo
 111778 Avalon vest



111534 Knitted Half Zip
 110885 Embrace Pants 32



111251 Hailey Polo
 111696 Jolene Pile Vest
 111477 Kay Golf Pants



111785 Seion Cap
 111251 Hailey Polo
 111696 Jolene Pile Vest



111785 Seion Cap
111688 Miriam LS Poloshirt
111506 Anne Knitted Vest



111688 Miriam LS Poloshirt
111506 Anne Knitted Vest
110740 Insulate Pants 32



110680 Logo Sun Visor
111241 Leah Wind Cardigan



110680 Logo Sun Visor
111241 Leah Wind Cardigan



111688 Miriam LS Poloshirt
111506 Anne Knitted Vest



110752 Sia Poloshirt
111778 Avalon vest
110740 Insulate Pants 32



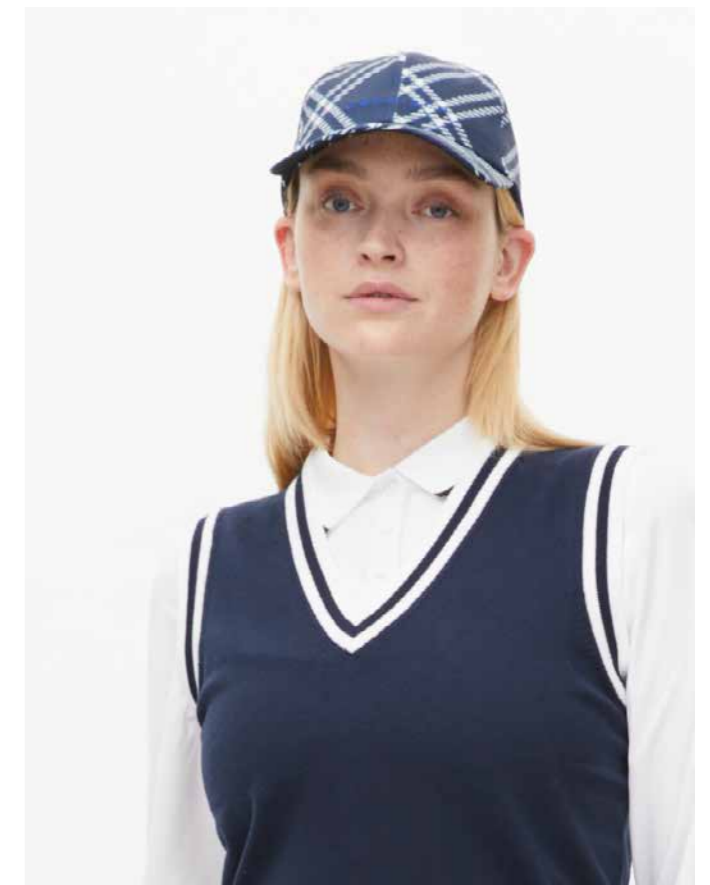
111251 Hailey Polo
111696 Jolene Pile Vest



111251 Hailey Polo
111696 Jolene Pile Vest
110740 Insulate Pants 32



111785 Seion Soft Cap
111688 Miriam LS Poloshirt
111669 Adele Knitted Vest
110739 Lexi Pants 30
25



111785 Seion Soft Cap
111688 Miriam LS Poloshirt
111669 Adele Knitted Vest



111670 Angel Knit Sweater
111250 Jessie Pants



111785 Seion Cap
111670 Angel Knit Sweater



111653 Frosty Quilt Jacket



111653 Frosty Quilt Jacket
111682 Jessie Yarn dye Pants



111285 Force Hood Jacket
111661 Force Padded Skirt



111335 Bucket Hat
111688 Miriam LS Poloshirt



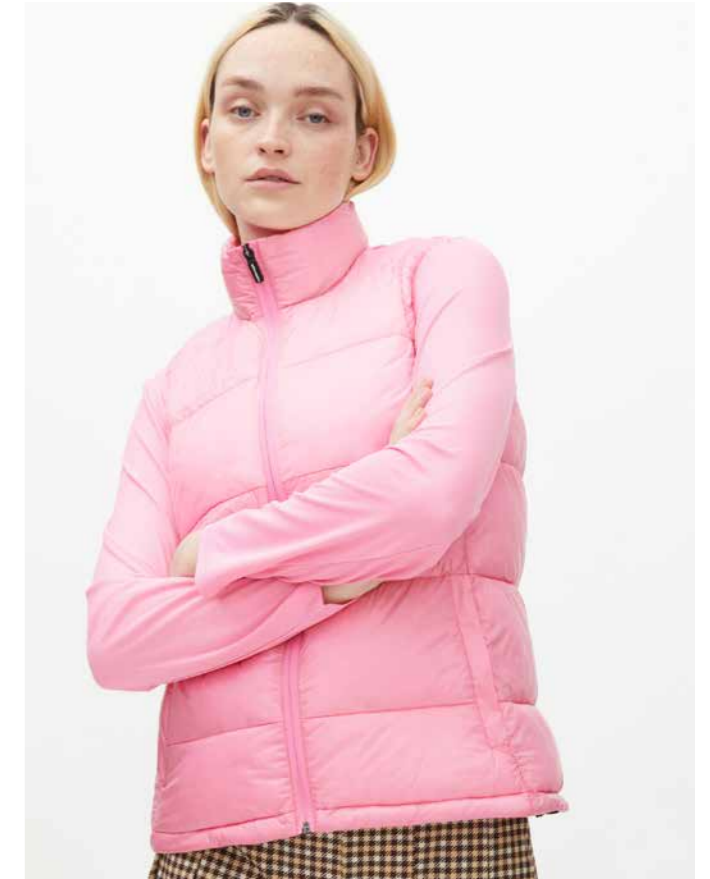
111692 Anne Jacquard Sweater



111335 Bucket Hat
111688 Miriam LS Poloshirt
111505 Lily Pleat Skort



111688 Miriam LS Poloshirt
111778 Avalon vest



111688 Miriam LS Poloshirt
111778 Avalon vest



111785 Seion Cap
111665 Blaze Cardigan



111785 Seion Cap
111665 Blaze Cardigan



111534 Knitted Half Zip



111534 Knitted Half Zip



111670 Angel Knit Sweater



111670 Angel Knit Sweater
111777 Jess pants



111666 Eira Thermal Top
111661 Force Padded Skort



111666 Eira Thermal Top
111661 Force Padded Skort



111666 Eira Thermal Top



111283 Elle Polo
111474 Aimi Midlayer Vest



111283 Elle Polo
111474 Aimi Midlayer Vest
111682 Jess Yarndye Pants



111666 Eira Thermal Top
110739 Lexi Pants 30



111666 Eira Thermal Top



111335 Bucket Hat
111283 Elle Polo
111778 Avalon vest



111251 Hailey Polo
111778 Avalon vest
111682 Jess Yarndye Pants



111691 Talia Sleeveless Top
111508 Amy Skort



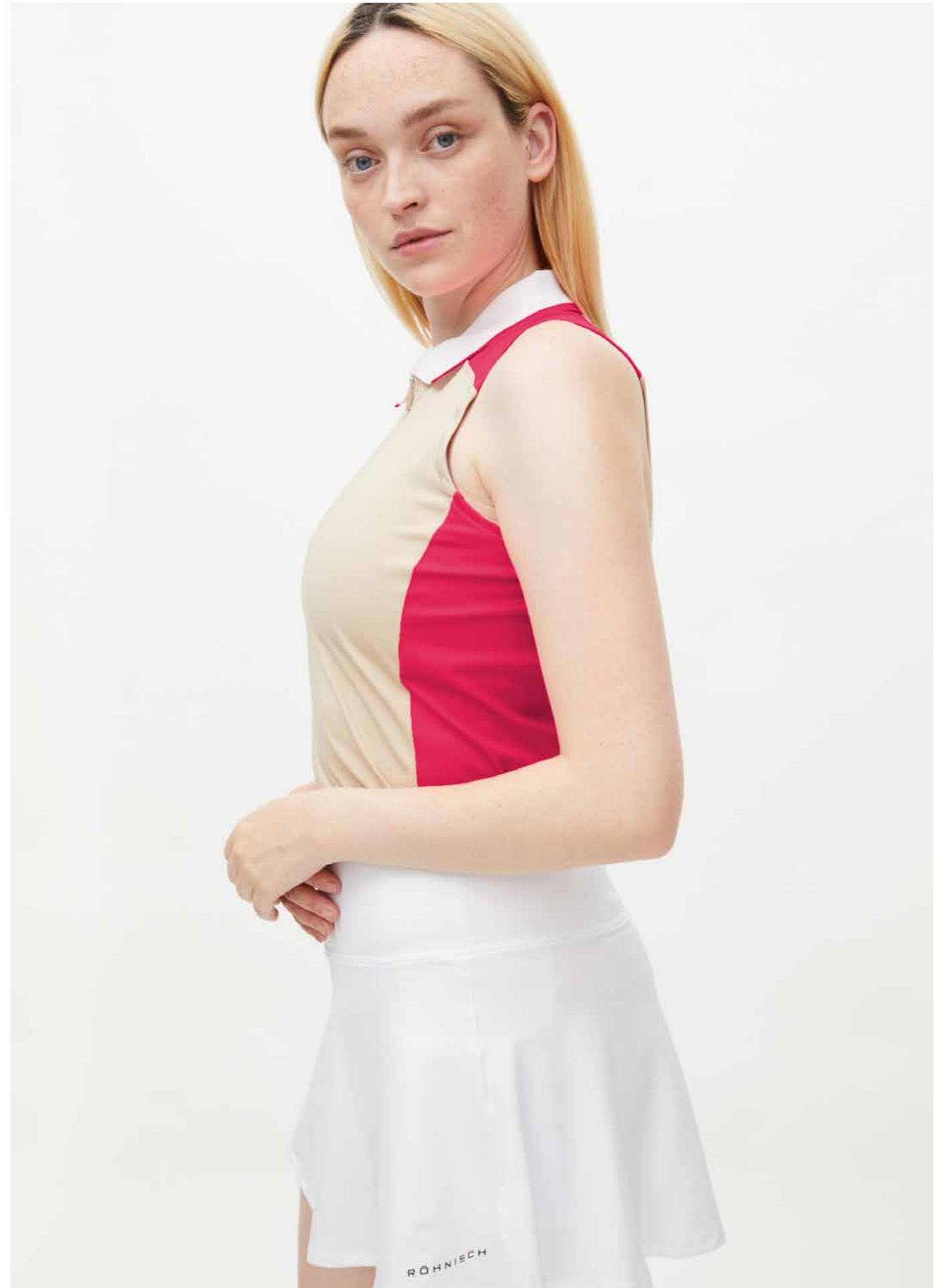
111691 Talia Sleeveless Top
111508 Amy Skort
111746 Knee Socks



111288 Abby Sleeveless Dress



111288 Abby Sleeveless Dress



111691 Talia Sleeveless Top
111508 Amy Skort



111691 Talia Sleeveless Top
111651 Dawn Pleat Skort



111715 Imen Wind Jacket
111651 Dawn Pleat Skort



111715 Imen Wind Jacket
111651 Dawn Pleat Skort



111690 Talia Sleeveless Dress



111681 Amy Regular Skort

Bottoms⁰²

111961 Lily Mid Pleat skort 32-48



T429 MINICHECK BROWN

● Sustainable choice

COMPOSITION 1
92% Polyester
8% Elastane

COMPOSITION 2
100% Polyester

COMPOSITION 3
93,5% Polyester
6,5% Elastane

SKORT LENGTH
45 cm (Size 40)

- BENEFITS
- Made in 92% recycled Polyester
 - Inner shorts with pocket
 - Pocket at CB
 - Feminin and flirty pleat design
 - Regular fit

111661 Force Padded Skirt XXS - XXXL



0001 BLACK BACK S014 NAVY

COMPOSITION 1
93% Polyester
7% Elastane

COMPOSITION 2
100% Polyamide

BACK LENGTH
53 cm (Size M)

- BENEFITS
- 93% Recycled polyester
 - 100% Non recycled Polyamide
 - Recycled Polyester filling from Sorona
 - Seamless down channels
 - Softshell fabric in side panels
 - Hand pocket zippers
 - Regular fit

110739 Lexi pants 30 32 - 48



0001 BLACK BACK SIDE S463 SEAL BROWN T426 OVERSIZE CHECK NAVY

● Sustainable choice

COMPOSITION
93% Polyester
7% Elastane

INSEAM
76 cm (Size 40)

- BENEFITS
- Made in 93% Recycled Polyester
 - Softshell fabric with 3 layer function
 - Wind and water resistant at face side
 - Fleece at inside
 - Ballmarker
 - Stripes at side
 - Pockets at front and back
 - High waist
 - Regular fit

111977 Lexi pants 32 32 - 48



0001 BLACK BACK SIDE S463 SEAL BROWN T426 OVERSIZE CHECK NAVY

● Sustainable choice

COMPOSITION
93% Polyester
7% Elastane

INSEAM
76 cm (Size 40)

- BENEFITS
- Made in 93% Recycled Polyester
 - Softshell fabric with 3 layer function
 - Wind and water resistant at face side
 - Fleece at inside
 - Ballmarker
 - Stripes at side
 - Pockets at front and back
 - High waist
 - Regular fit

111777 Jess pants 32 - 48



0001 BLACK BACK S014 NAVY

● Sustainable choice

COMPOSITION
95% Polyester
5% Elastane

INSEAM
70 cm (Size 40)

- BENEFITS
- Made in 85% Recycled Polyamide
 - Flattering heavy jersey
 - Fabric with high stretchability and comfort
 - Zip pockets at front
 - High waist
 - Slim fit

111682 Jess Yarn-dye Pants 32 - 48



T428 MINI-CHECK TURKISH SEA T429 MINI-CHECK BROWN

COMPOSITION
31% Recycled Polyester
32% Polyester
34% Viscose
3% Elastane

INSEAM
70 cm (Size 40)

- BENEFITS
- Made in 85% Polyamide
 - Flattering heavy jersey
 - Fabric with high stretchability and comfort
 - Zip pockets at front
 - High waist
 - Slim fit

111478 Kay Golf Pants 32 - 54

Sustainable choice



0001 BLACK BACK S346 NOUGAT

- COMPOSITION
90% Polyester
10% Elastane
- INSEAM
64,5 cm (Size 40)
- BENEFITS
- 90% Recycled polyester
 - 4-way stretch
 - Pull on style
 - Mid waist

110571 Embrace pants 30 32-54



0001 BLACK BACK S014 NAVY S340 SAFARI

- COMPOSITION
76% Viscose
20% Polyamide
4% Elastane
- INSEAM
76 cm (Size 40)
- BENEFITS
- 2 way stretch
 - Biodegradable
 - Firm and glossy fabric that embrace your curves
 - Ball marker
 - Pull on style
 - Slim straight fit
 - High waist

111490 Chie Pants 30 32 - 52

Sustainable choice



0001 BLACK BACK S014 NAVY S444 BEIGE SAND

- COMPOSITION
86% Polyester
14% Elastane
- INSEAM
76cm (Size 40)
- BENEFITS
- Made in 86% Recycled Polyester
 - Super soft and thin twill fabric
 - 4-way mechanical stretch
 - Quick dry and Wrinkle free
 - Ballmarker
 - Regular fit with

110885 Embrace pants 32 32-54



0001 BLACK BACK S014 NAVY S340 SAFARI

- COMPOSITION
76% Viscose
20% Polyamide
4% Elastane
- INSEAM
81 cm (Size 40)
- LENGHT
- 2 way stretch
 - Firm and glossy fabric that embrace your curves
 - Ball marker
 - Pull on style
 - Slim straight fit
 - High waist

111491 Chie Pants 32 32-52

Sustainable choice



0001 BLACK BACK S014 NAVY S444 BEIGE SAND

- COMPOSITION
86% Polyester
14% Elastane
- LENGHT
81 cm (Size 40)
- BENEFITS
- Made in 86% Recycled Polyester
 - Super soft and thin twill fabric
 - 4-way mechanical stretch
 - Quick dry and Wrinkle free
 - Ballmarker
 - Regular fit

111027 Insulate pants 30 32 - 54

Sustainable choice



0001 BLACK BACK S014 NAVY S346 NOUGAT

- COMPOSITION
93% Polyester
7% Elastane
- LENGHT
76 cm (Size 40)
- BENEFITS
- Made in 93% Recycled Polyester
 - Softshell fabric with 3 layer function
 - Wind and water resistant at face side
 - Fleece at inside
 - Ballmarker
 - Pockets at front and back
 - High waist
 - Regular fit

110740 Insulate pants 32 32-48



0001 BLACK BACK S014 NAVY S346 NOUGAT

Sustainable choice

COMPOSITION

93% Polyester
7% Elastane

LENGHT

81 cm (Size 40)

BENEFITS

- Made in 93% Recycled Polyester
- Softshell fabric with 3 layer function
- Wind and water resistant at face side
- Fleece at inside
- Ballmarker
- Pockets at front and back
- High waist
- Regular fit

111900 Imen Wind Pants XS - XXXL



0001 BLACK BACK

Sustainable choice

COMPOSITION

62% Nylon
38%weft recycled

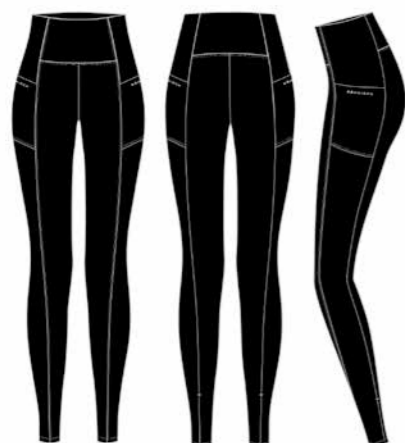
LENGHT

78 cm (Size M)

BENEFITS

- Made in 100% Recycled lightweight Polyamide
- Recycleable
- 2 slanted side pockets
- Elastic waistband
- Drawstring inside at front with rubber endings
- Drawstrings inside bottom of leg
- Logo print at front leg
- Oversized loose fit

111207 Thermal Tights XXS - XXXL



0001 BLACK BACK SIDE

Sustainable choice

COMPOSITION

86% Polyester
14% Elastane

BENEFITS

- Made in 86% recycled Polyester
- Warming thermo jersey
- Side pockets
- Drawstring at waist
- High waist
- Tight fit

110908 Ally Merino Base Tights XXS - XXXL



0001 BLACK BACK S014 NAVY

Sustainable choice

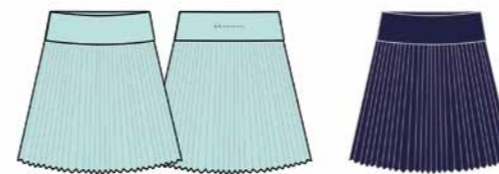
COMPOSITION

70% Merino wool
30% Polyamide

BENEFITS

- Certified Non-mulsing merino wool
- Super soft handfeel
- For allround use
- Functional polyester inside with moisture wicking construction
- Regular fit

111651 Dawn Pleat Skort XXS - XXXL



S309 BLEACHED AQUA BACK S014 NAVY

Sustainable choice

COMPOSITION

92% Polyester
8% Elastane

BACK LENGHT

42 cm (Size M)

BENEFITS

- Made in 92% Recycled polyester
- Waistband in jersey for extra comfort
- Pocket at waistband CB
- Innershorts with pocket

111508 Amy Skort XXS - XXXL



T443 PEG PINK BACK T444 PEG NAVY 0010 WHITE

Sustainable choice

COMPOSITION 1

89% Polyester
11% Elastane

COMPOSITION 2

87% Polyester
13% Elastane

BACK LENGHT

42 cm (Size M)

BENEFITS

- Made in 89% Recycled Polyester
- Moisture wicking and breathable fabric
- Innershorts with pocket
- Pocket at centerback

111681 Amy Regular Skort XXS - XXXL



T443 PEG PINK BACK T444 PEG NAVY 0010 WHITE



5380 NEON PINK

● Sustainable choice

COMPOSITION 1
89% Polyester
11% Elastane

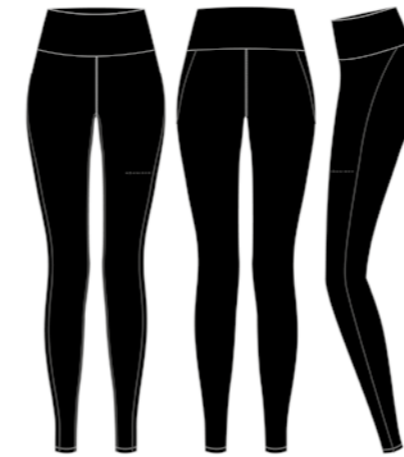
COMPOSITION
87% Polyester
13% Elastane

BACK LENGTH
48 cm (size M)

BENEFITS

- Made in 89% Recycled Polyester
- Moisture wicking and breathable fabric
- Innershorts with pocket
- Pocket at centerback

111312 Base Layer Tights XS - XXXL



0001 BLACK BACK SIDE

● Sustainable choice

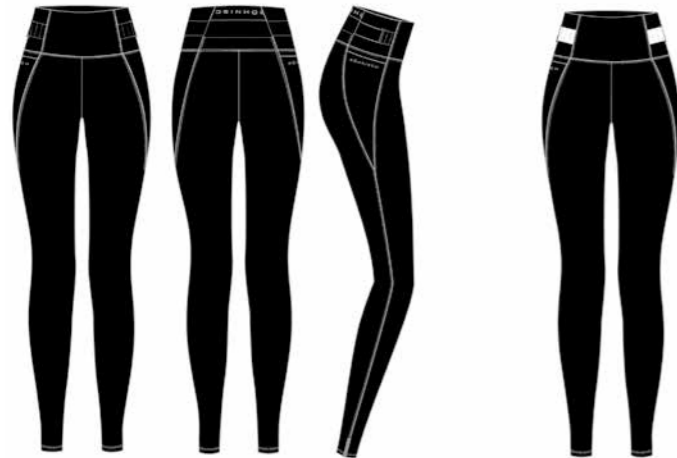
COMPOSITION
85% Polyester
15% Elastane

INSEAM
68 cm (Size M)

BENEFITS

- Made in 88% Recycled polyester
- Stretchy melange with a peach treatment for a soft warm feeling
- Babylock stitch in contrast color
- Logo print at front of leg
- Tight fit
- Long length

110650 Infinite Flex Tights XS - XXXL



0001 BLACK BACK SIDE 0010 WHITE

COMPOSITION
69% Polyester
31% Elastane

INSEAM
69 cm (Size M)

● Sustainable choice

BENEFITS

- Made in 69% recycled polyester
- Compression fabric for high intense activities
- Breathable and moisture wicking fabric
- Adjustable at both sides of waist with hooks
- Bonded pocket at side of leg
- Logo reflective tab at bottom of leg
- Röhnisch logo text at centerback
- High waist and long length

111883 Infinite Flex Printed Tights XS - XXXL



T424 TOFU SNAKE BACK SIDE

COMPOSITION
69% Polyester
31% Elastane

INSEAM
69 cm (Size M)

● Sustainable choice

BENEFITS

- Made in 69% recycled polyester
- Compression fabric for high intense activities
- Breathable and moisture wicking fabric
- Adjustable at both sides of waist with hooks
- Bonded pocket at side of leg
- Logo reflective tab at bottom of leg
- Röhnisch logo text at centerback
- High waist and long length

Tops & Knits⁰³

111283 **Elle polo** XXS - XXXL



● Sustainable choice

COMPOSITION
90% Polyester
10% Elastane

BENEFITS

- Made in 90% Recycled Polyester
- Moisture wicking fabric with brushed inside for extra warmth
- Turtleneck design
- Regular fit

111666 **Eira Thermal Top** XXS - XXXL



● Sustainable choice

COMPOSITION
90% Polyester
10% Elastane

BENEFITS

- Made in 90% Recycled Polyester
- Moisture wicking fabric with brushed inside for extra warmth
- Printed side panels
- Half zip at neck
- Regular fit

110752 **Sia Poloshirt** XXS - XXXL



● Sustainable choice

COMPOSITION
90% Polyester
10% Elastane

BENEFITS

- Made in 90% Recycled Polyester
- Moisture wicking fabric with brushed inside for extra warmth
- Hidden placket
- Flat knit collar
- Regular fit

111665 **Blaze Cardigan** XXS - XXXL



● Sustainable choice

COMPOSITION
88% Recycled Polyester
12% Elastane

BENEFITS

- Made in 88% Recycled Polyester
- Stretched single jersey with brushed inside
- Quick dry
- Full zip at front
- Zip pockets
- Tight fit

111251 **Hailey polo** XXS - XXXL



● Sustainable choice

COMPOSITION
88% Polyester
12% Elastane

BENEFITS

- Made in 88% Recycled Polyester
- Made in soft thin melange fabric
- Quick dry and moisture wicking fabric
- Turtleneck design
- Regular fit

111679 **Polar Fleece** XXS - XXXL



● Sustainable choice

COMPOSITION
100% Polyester

BENEFITS

- Made in 100% Recycled Polyester
- Warming soft fleece fabric
- Front half zip
- Regular fit

111519 **Miriam Poloshirt** XXS - XXXL

Sustainable choice

COMPOSITION
100% Polyester

LENGHT
88 cm (size M)

- BENEFITS
- Made in 100% Recycled Polyester
 - Soft cotton-feel piquet
 - Quick dry and moisture wicking
 - Regular fit



111678 **Skyler Half Zip** XXS - XXXL

Sustainable choice

COMPOSITION
88% Polyester
12% Elastane

- BENEFITS
- Made in 88% Recycled Polyester
 - Moisture wicking fabric with brushed inside for extra warmth
 - Half turtleneck design
 - Regular fit



111688 **Miriam Long Sleeve Poloshirt** XXS - XXXL

Sustainable choice

COMPOSITION
100% Polyester

LENGHT
88 cm (size M)

- BENEFITS
- Made in 100% Recycled Polyester
 - Soft cotton-feel piquet
 - Quick dry and moisture wicking
 - Regular fit



111694 **Iconic Golf Sweatshirt** XXS - XXL

Sustainable choice

COMPOSITION
100% Cotton

- BENEFITS
- Made in 100% Organic cotton, french terry
 - Made in Europe
 - Soft wash effect
 - Logo embroider at front
 - Loose fit



111517 **Addy Long Sleeve** XXS - XXXL

Sustainable choice

COMPOSITION
100% Polyester

- BENEFITS
- Made in 100% Recycled Polyester
 - Double jersey UPF 50+
 - Breathable and moisture wicking
 - Zipper at collar
 - Regular fit



111506 **Anne Knitted Vest** XXS - XXXL

Sustainable choice

COMPOSITION
100% Cotton

- BENEFITS
- Made in 100% Organic cotton
 - Biodegradable
 - Argyle jaquard design
 - Loose fit



111692 Anne Jacquard Sweater XXS - XXXL



S174 TOFU BACK

● Sustainable choice

COMPOSITION
100% Cotton

- BENEFITS
- Made in 100% Organic cotton
 - Biodegradable
 - Argyle jacquard design
 - Loose fit

111670 Angel Knit Sweater XXS-XXXL



S176 TOFU BACK S014 NAVY

COMPOSITION
50% Merino wool
50% Acrylic

- BENEFITS
- Made in 50% Merino wool
 - Trendy, sharp knit for both on and off course
 - Regular fit

111669 Adele Knitted Vest XXS - XXXL



S014 NAVY BACK

● Sustainable choice

COMPOSITION
72% Cotton
24% Polyamide
4% Elastane

- BENEFITS
- Made in 72% Organic cotton
 - Layer up for a preppy look both on course and off course
 - Regular fit

111671 Angel Jacquard Knit XXS - XXXL



S014 NAVY BACK

COMPOSITION
50% Merino wool
50% Acrylic

- BENEFITS
- Made in 50% Merino Wool
 - Trendy, sharp knit for both on and off course
 - Regular fit

111668 Adele Knitted Sweater XXS-XXXL



S444 BEIGE SAND BACK S014 NAVY S487 SACHET PINK

● Sustainable choice

COMPOSITION
72% Cotton
24% Polyamide
4% Elastane

- BENEFITS
- Made in 72% Organic cotton
 - Layer up for a preppy look both on course and off course
 - Plain knit with decorative stripes
 - Regular fit

111534 Knitted Half Zip XXS-XXXL



0001 BLACK BACK S486 OPAL

COMPOSITION
75% Cotton
22% Nylon
3% Elastane

- BENEFITS
- Made in 75% Cotton
 - Layer up for a preppy look both on course and off course
 - Half zip
 - Regular fit

110729 Ally Merino Base Top XXS-XXXL



0001 BLACK BACK S014 NAVY

- COMPOSITION
70% Merino wool
30% Polyamide
- BENEFITS
- Certified Non-mulesing merino wool
 - Super soft handfeel
 - For allround use
 - Functional polyester inside with moisture wicking construction
 - Regular fit

111286 Abby Sleeveless Top XXS - XXXL



S380 NEON PINK BACK S520 NAVY/WHITE 0010 WHITE

- Sustainable choice
- COMPOSITION
86% polyester
14% elastane
- BENEFITS
- Made in 87% Recycled Polyester
 - Quick dry and moisture wicking
 - Regular fit

111500 Abby Poloshirt XXS - XXXL



S520 NAVY/WHITE BACK S309 BLEACHED AQUA

- Sustainable choice
- COMPOSITION
86% polyester
14% elastane
- BENEFITS
- Made in 87% Recycled Polyester
 - Quick dry and moisture wicking
 - Regular fit

111288 Abby Sleeveless Dress XXS-XXXL



S380 NEON PINK BACK S520 NAVY/WHITE

- Sustainable choice
- COMPOSITION 1
89% Polyester
11% Elastane
- COMPOSITION 2
87% Polyester
13% Elastane
- BACK LENGTH
88 cm (Size M)
- BENEFITS
- Made in 89% Recycled Polyester
 - Quick dry and moisture wicking
 - Zip pocket
 - Inner shorts with pocket
 - Regular fit

111691 Talia Sleeveless Top XXS - XXXL



T444 PEG NAVY BACK S488 HUMUS

- Sustainable choice
- COMPOSITION 1
77% Polyester
23% Elastane
- COMPOSITION 2
90% Polyester
10% Elastane
- BENEFITS
- Made in 77% Recycled Polyester
 - Quick dry and moisture wicking
 - Sporty zig zag details around armhole
 - Regular fit

111690 Talia Sleeveless Dress XXS - XXXL



T444 PEG NAVY BACK S488 HUMUS

- Sustainable choice
- COMPOSITION 1
77% Polyester
23% Elastane
- COMPOSITION 2
87% Polyester
13% Elastane
- CENTERBACK LENGTH
89 cm (Size M)
- BENEFITS
- Made in 77% Recycled Polyester
 - Quick dry and moisture wicking
 - Contrast side panel
 - Sporty zig zag details at armhole
 - Zip at front
 - Regular fit

111311

Base Layer Long Sleeve XS - XXXL

● Sustainable choice



0001 BLACK

BACK

COMPOSITION

88% Polyester
12% Elastane

BENEFITS

- Made in 88% Recycled polyester
- Stretchy melange with a peach treatment for a soft warm feeling
- Babylock stitch in contrast color
- Logo print at centerfront
- Thumb grip
- Tight fit

All weather⁰⁴

111696 Joline Pile Vest XXS - XXXL



S347 WHITE SWAN BACK T426 OVERSIZE CHECK NAVY

● Sustainable choice

COMPOSITION 1
100% Polyester

COMPOSITION 2
95% Polyester
5% Elastane

BENEFITS

- Made in 70% Recycled Polyester
- Warming pile fabric
- Knitted inside
- Wind stretch fabric on shoulders and yoke
- Full zip
- Zip pockets
- Regular fit

111778 Avalon Vest XXS - XXXL



0001 BLACK BACK S014 NAVY S453 SULPHUR SPRING S486 OPAL S487 SACHET PINK



T423 BROWN SNAKE S346 NOUGAT

● Sustainable choice

COMPOSITION
100% Polyamide

BENEFITS

- Made in 100% Recycled Polyamide
- Thermolite recycled polyester down like filling
- Quilt panels
- Zip pockets
- Regular fit

111657 Joline Pile Jacket XXS - XXXL



S347 WHITE SWAN BACK

● Sustainable choice

COMPOSITION 1
100% Polyester

COMPOSITION 2
95% Polyester
5% Elastane

BENEFITS

- Made in 70% Recycled Polyester
- Warming pile fabric
- Knitted inside
- Wind stretch fabric on shoulders and yoke
- Full zip
- Zip pockets
- Regular fit

111779 Avalon jacket XXS - XXXL



0001 BLACK BACK S014 NAVY S346 NOUGAT T423 BROWN SNAKE



S486 OPAL S453 SULPHUR SPRING

● Sustainable choice

COMPOSITION
100% Polyamide

BENEFITS

- Made in 100% Recycled Polyamide
- Thermolite recycled polyester down like filling
- Quilt panels
- Zip pockets
- Regular fit

111672 Cloud Pile Half Zip XXS - XXXL



0001 BLACK BACK

● Sustainable choice

COMPOSITION 1
100% Polyester

COMPOSITION 2
95% Polyester
5% Elastane

BENEFITS

- Made in 100% Recycled Polyester
- Warming pile fabric
- Half zip
- Zip pockets
- Slightly rounded fit

111284 Leah wind vest XXS - XXXL



S014 NAVY BACK S444 BEIGE SAND

● Sustainable choice

COMPOSITION 1
100% Polyester

COMPOSITION 2
100% Nylon

BENEFITS

- Made in 70 % Recycled Polyester
- Moisture wicking fabric
- Breathable wind resistant stretch lining
- Diamond quilt design
- Front pockets with zip
- Regular fit

111241 Leah wind cardigan XXS - XXXL



S014 NAVY BACK S444 BEIGE SAND

- COMPOSITION 1
100% Polyester
- COMPOSITION 2
100% Nylon
- BENEFITS
- Made in 70 % Recycled Polyester
 - Moisture wicking fabric
 - Breathable wind resistant stretch lining
 - Diamond quilt design
 - Pockets with zip at front
 - Regular fit

111654 Frosty Quilt Vest XXS - XXXL



S014 NAVY BACK S322 COFFEE BEAN

- Sustainable choice
- COMPOSITION
100% Polyester
- BENEFITS
- Made in 100% Recycled Polyester in Ribstop
 - High stretch warm Thermo jersey
 - Brushed inside for extra warmth
 - Light woven windproof fabric at front and back
 - Zip pockets
 - Regular fit

111653 Frosty Quilt Jacket XXS - XXXL



S014 NAVY BACK S322 COFFEE BEAN

- Sustainable choice
- COMPOSITION
100% Polyester
- BENEFITS
- Made in 100% Recycled Polyester
 - Ribstop
 - High stretch warm Thermo jersey
 - Brushed inside for extra warmth
 - Light woven windproof fabric at front and back
 - Zip pockets
 - Regular fit

111474 Aimi Midlayer Vest XXS - XXXL



0001 BLACK BACK S322 COFFEE BEAN

- Sustainable choice
- COMPOSITION 1
92% Polyester
8% Elastane
- COMPOSITION 2
100% Polyester
- BENEFITS
- Made in 90% Recycled Polyester
 - Jersey with brushed inside
 - Wind fabric panels
 - Full zip at front
 - Zip pockets
 - Tight fit

111487 Aimi Midlayer Jacket XXS - XXXL



0001 BLACK BACK S322 COFFEE BEAN

- Sustainable choice
- COMPOSITION 1
90% Polyester
10% Elastane
- COMPOSITION 2
100% Polyester
- BENEFITS
- Made in 90% Recycled Polyester
 - Jersey with brushed inside
 - Wind fabric panels
 - Full zip at front
 - Zip pockets
 - Tight fit

110735 Force vest XXS - XXXL



0001 BLACK BACK S346 NOUGAT

- COMPOSITION 1
93% Polyester
7% Elastane
- COMPOSITION 2
100% Polyamide
- BENEFITS
- Recycled Polyester filling from Sorona
 - Seamless down channels
 - Softshell fabric in side panels
 - Hand pocket zippers
 - Regular fit

110734 Force jacket XXS - XXXL



0001 BLACK BACK S014 NAVY S346 NOUGAT

COMPOSITION 1
93% Polyester
7% Elastane

COMPOSITION 2
100% Polyamide

- BENEFITS
- Recycled Polyester filling from Sorona
 - Seamless down channels
 - Softshell fabric in side panels
 - Hand pocket zippers
 - Regular fit

111715 Imen Wind Jacket XXS - XXXL



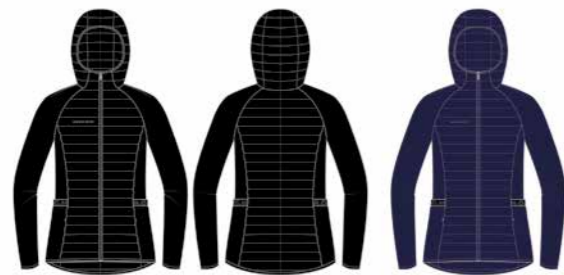
0001 BLACK S309 BLEACHED AQUA

● Sustainable choice

COMPOSITION
100% Recycled Polyamide

- BENEFITS
- Made in 38% Recycled lightweight Polyamide
 - Recycleable
 - Zipper at front with rubber logo puller
 - Invisible zipped front pockets
 - Logo print at chest

111285 Force hood jacket XXS - XXXL



0001 BLACK BACK S014 NAVY

COMPOSITION
93% Polyester
7% Elastane

- BENEFITS
- Recycled Polyester filling from Sorona
 - Seamless down channels
 - Softshell fabric in side panels
 - Hand pocket zippers
 - Regular fit

111680 Hurricane Rain Jacket XXS - XXXL



0001 BLACK BACK

● Sustainable choice

COMPOSITION
100% Recycled Polyester

- BENEFITS
- 100% Recycled Polyester
 - TPU membrane
 - Soft 2-way mechanical stretch fabric
 - Windproof
 - Breathable 10 000 g/m²/24h
 - Waterproof 10 000 mm
 - Durable water repellent
 - Water resistant zippers
 - Taped seams
 - Printed lining
 - Hidden hood
 - Regular fit

111710 Sabell Stretch Fleece jacket XXS - XXXL



0001 BLACK BACK S445 OATMEAL

COMPOSITION 1
46% Polyamide
46% Polyester
8% Elastane

- BENEFITS
- Made in 100% Recycled Polyester
 - Warming soft fleece on inside
 - Fully zipped
 - Hand pocket with zippers
 - Logo embroidery
 - Thumb grip
 - Regular fit

● Sustainable choice

110581 Storm Rain Jacket XXS - XXXL



0001 BLACK BACK S014 NAVY

COMPOSITION
100% Polyester

- BENEFITS
- 100% Polyester TPU membrane
 - Soft 2-way mechanical stretch fabric
 - Windproof
 - Breathable 10 000 g/m²/24h
 - Waterproof 20 000 mm
 - Water resistant zippers
 - Durable water repellent
 - Taped seams
 - Mesh lining
 - Regular fit

110597 Storm Rain Pants 30 XXS - XXXL



0001 BLACK BACK

COMPOSITION
100% Polyester

INSEAM
76 cm (size M)

- BENEFITS
- 100% Polyester
 - TPU membrane
 - Soft 2-way mechanical stretch fabric
 - Windproof
 - Breathable 10 000 g/m²/24h
 - Waterproof 20 000 mm
 - Water resistant zippers
 - Durable water repellent
 - Taped seams
 - Regular fit

110598 Storm Rain Pants 32 XS - XXXL



0001 BLACK BACK

COMPOSITION
100% Polyester

INSEAM
81 cm (size M)

- BENEFITS
- 100% Polyester
 - TPU membrane
 - Soft 2-way mechanical stretch fabric
 - Windproof
 - Breathable 10 000 g/m²/24h
 - Waterproof 20 000 mm
 - Water resistant zippers
 - Durable water repellent
 - Taped seams
 - Regular fit

Maternity⁰⁵

111266 Dana Maternity Pants XXS - XXXL

● Sustainable choice

COMPOSITION

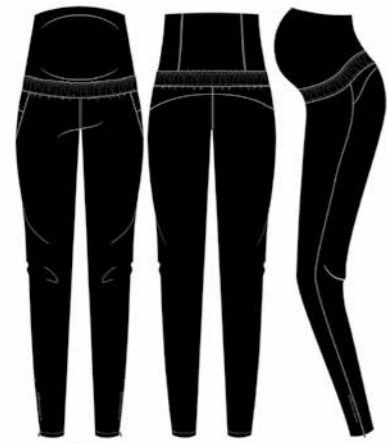
92% Polyester
8% Elastane

INSEAM

81 cm (size M)

BENEFITS

- Made in 92% Recycled Polyester
- Designed for bump to baby
- Soft jersey bump band
- Light wind stopper fabric
- Quick dry two-way stretch
- Zip pockets at front and back
- Zipper at leg opening
- Drawstring at waist
- Regular fit with tapered legs



0001 BLACK BACK SIDE

111529 Miriam Maternity Poloshirt XXS - XXXL

● Sustainable choice

COMPOSITION

100% Polyester

BENEFITS

- Made in 100% Recycled Polyester
- Soft cotton-feel piquet
- Quick dry and moisture wicking
- Hidden placket
- Regular fit



0010 WHITE BACK

Accessories⁰⁶

110680 Logo Sun Visor ONESIZE

● Sustainable choice



0001 BLACK

S309 BLEACHED
AQUA

S014 NAVY

0010 WHITE



S380 NEON PINK

- COMPOSITION
92% Polyamide
8% Elastane
- BENEFITS
- Made in 92% Recycled Polyester
 - Quick dry soft visor
 - Logo elastic band at back with metal adjuster

111414 Sun Protection Visor ONESIZE

● Sustainable choice



0010 WHITE

S014 NAVY

- COMPOSITION
92% Polyamide
8% Elastane
- BENEFITS
- Made in 92% Recycled Polyester
 - Quick dry soft visor
 - Elastic band at back

111785 Seion Soft Cap ONESIZE

● Sustainable choice



0001 BLACK

S487 SACHET
PINK

S014 NAVY

T429 MINICHECK
BROWN



0010 WHITE



T423 BROWN
SNAKE

- COMPOSITION 1
92% Polyester
8% Elastane
- BENEFITS
- Made in 92% Recycled Polyester
 - Thin and comfortable two-way stretch
 - Quick dry
 - Adjustable strap at back

111139 Teni Hat S-M - L-XL



2724 BEACH

- COMPOSITION
100% Paper
- BENEFITS
- Straw hat
 - Fit to protect you from the sun

111335 Bucket Hat S/M - L/XL

● Sustainable choice



0001 BLACK

T429 MINICHECK
BROWN

- COMPOSITION
92% Polyester
8% Elastane
- BENEFITS
- Made in 92% Recycled polyester
 - Made in soft and breathable fabric
 - Thin and comfortable two-way stretch
 - Quick dry

111749 Rainy Hat S/M - L/XL



0001 BLACK

- COMPOSITION
100% Polyester
- BENEFITS
- Recycled material
 - Breathable 10 000 g/m²/24h
 - Waterproof 10 000 mm
 - Reflex print
 - Adjustable drawstring

111783 **Cliff Rain Cap** ONESIZE



0001 BLACK

● Sustainable choice

COMPOSITION
100% Polyester

- BENEFITS
- Made in 100% Recycled polyester
 - Breathable 5 000 g/m²/24h
 - Waterproof 5 000 mm
 - Reflex print
 - Adjustable back strap

111737 **Sporty Pom Beanie** ONESIZE



0001 BLACK

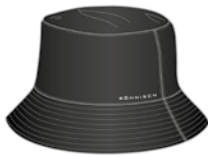
S444 BEIGE SAND

● Sustainable choice

COMPOSITION
54% Polyester
20% Polyamide
20% Acrylic
6% Wool

- BENEFITS
- Made in 54% Recycled Polyester
 - Soft and warming
 - Smooth and warming knitwear blend
 - Ribbed knit at bottom
 - Jacquard logo
 - Yarn Pom

111786 **Cliff Rain Bucket Hat** ONESIZE



0001 BLACK

● Sustainable choice

COMPOSITION
100% Polyester

- BENEFITS
- Made in 100% Recycled polyester
 - Breathable 5 000 g/m²/24h
 - Waterproof 5 000 mm
 - Reflex print

111739 **Pom Rib Beanie** ONESIZE



0001 BLACK

S014 NAVY

S445 OATMEAL

S477 CORAL BLUSH

● Sustainable choice

COMPOSITION
77% Polyester
15% Polyamide
5% Wool
3% Elastane

- BENEFITS
- 62% recycled polyester
 - Non-mulesing wool
 - Fake fur ball

110860 **Quilted Warm Cap** ONESIZE



0001 BLACK

S014 NAVY

S346 NOUGAT

● Sustainable choice

COMPOSITION
100% Polyamide

- BENEFITS
- Made in 100% Recycled Polyamide
 - Warm padded cap
 - Soft warm ear flaps
 - Size adjustable at back

111746 **Functional Knee Socks** 36-38 - 39-41



0001 BLACK

0010 WHITE

● Sustainable choice

COMPOSITION
71% Polyamide
18% Polyester
11% Elastane

- BENEFITS
- Made in 70% recycled polyamide
 - Breathable and moisture wicking yarn
 - Reinforced heel and toe
 - Arch support

111132 2-pack Functional Sport Socks 36-38 - 39-41



0001 BLACK 0010 WHITE

● Sustainable choice

COMPOSITION
98% Polyamide
2% Elastane

- BENEFITS
- Made in 70% recycled polyamide
 - Recycled yarn
 - Breathable and moisture wicking yarn
 - Light weight
 - Reinforced heel and toe
 - Arch support
 - 2-pack

111784 Amal Elastic Belt ONESIZE



0001 BLACK

● Sustainable choice

COMPOSITION
70% Polyester
30% Rubber

- BENEFITS
- Recycled Polyester
 - Elastic woven belt
 - Metal buckle with logo
 - Adjustable size

111334 2-pack Logo Socks 36-38 - 39-41



0010 WHITE 0001 BLACK S409 PINK LADY 0006 GREY MELANGE

● Sustainable choice

COMPOSITION
98% Polyamide
2% Elastane

- BENEFITS
- Made in 70% recycled polyamide
 - Breathable and moisture wicking yarn
 - Reinforced heel and toe
 - Arch support
 - 2-pack

111416 Magge Shoulder Bag ONESIZE



0001 BLACK

● Sustainable choice

COMPOSITION
75% Polyester
25% Elastane

- BENEFITS
- Recycled material
 - Water resistant material
 - Adjustable shoulder strap
 - Inner pocket

111747 Braided Stretch Belt ONESIZE



S014 NAVY

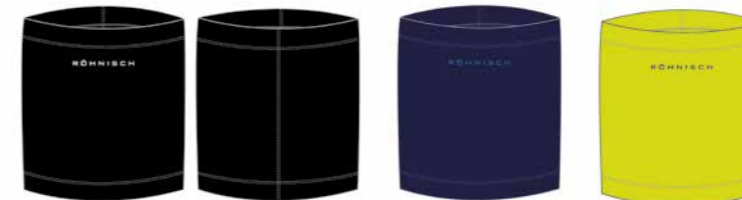
S444 BEIGE SAND

● Sustainable choice

COMPOSITION
50% Polyester
30% Rubber
20% Cotton

- BENEFITS
- Recycled Polyester
 - Elastic braided belt

111541 Jersey Neckwarmer ONESIZE



0001 BLACK

S014 NAVY

S453 SULPHUR SPRING

● Sustainable choice

COMPOSITION
88% Polyester
12% Elastane

- BENEFITS
- Made in 88% Recycled Polyester
 - Melange
 - Quick dry and moisture wicking fabric
 - Elastic and easy to pull over head

111740 Golf Umbrella ONESIZE



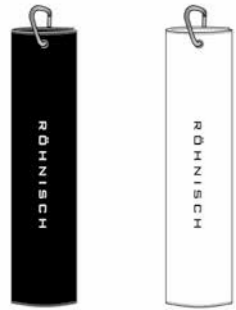
0001 BLACK

● Sustainable choice

COMPOSITION
100% Polyester

- BENEFITS
- Recycled polyester material
 - Waterproof
 - Double canopy with wind tunnels
 - Fibre glass shaft and ribs
 - Rubber handle

111741 Golf towel ONESIZE



0001 BLACK

0010 WHITE

● Sustainable choice

COMPOSITION
85% Polyester
15% Polyamide

- BENEFITS
- Recycled polyester
 - Quick dry waffle knit material
 - Metal hook

100856 Issa Expandable Running Belt 36-38 - 39-41



0001 BLACK

● Sustainable choice

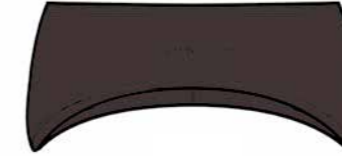
COMPOSITION
75% Polyester
25% Elastane

- BENEFITS
- Recycled material
 - Adjustable waist band
 - Pocket with water repellent zipper
 - Reflective print around pocket
 - Water resistant

110808 Pile Headband ONESIZE



0001 BLACK



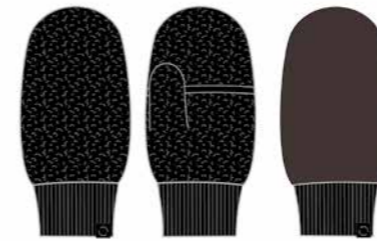
S463 SEAL BROWN

● Sustainable choice

COMPOSITION
100% Polyester

- BENEFITS
- Warming pile fabric
 - 70% Recycled Polyester
 - Soft jersey lining

110864 Pile Mittens ONESIZE



0001 BLACK

S463 SEAL BROWN

● Sustainable choice

COMPOSITION
100% Polyester

- BENEFITS
- Warming pile fabric in 70% Recycled Polyester
 - Ribbed cuff
 - Overlapped flap opening over the fingers

111743 Merino Headband ONESIZE

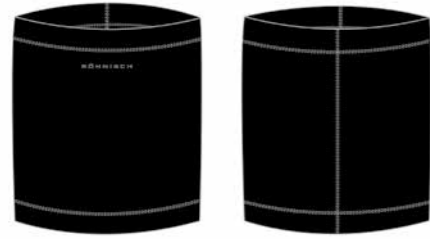


0001 BLACK

COMPOSITION
70% Merino wool
30% Polyamide

- BENEFITS
- Certified Non-musing merino wool
 - Super soft handfeel

111780 Merino Neckwarmer ONESIZE



0001 BLACK

COMPOSITION
70% Merino wool
30% Polyamide

- BENEFITS
- Certified Non-musing merino wool
 - Super soft handfeel

111781 Merino Beanie ONESIZE



0001 BLACK

COMPOSITION
70% Merino wool
30% Polyamide

- BENEFITS
- Certified Non-musing merino wool
 - Opening at back
 - Super soft handfeel
 - Tight fit

110513 Metal Water Bottle



S126 OYSTER GREY

COMPOSITION
100% Metal

- BENEFITS
- Metal bottle for both warm and cold drinks

Court⁰⁷

111864 Court Loose Tee XS - XXL

● Sustainable choice

COMPOSITION
100% Polyester

- BENEFITS
- Made in 100% Recycled Polyester
 - Moisture wicking and breathable
 - UPF 50+
 - Loose fit



● Sustainable choice

COMPOSITION
88% Polyester
12% Elastane

- BENEFITS
- Made in 100% Recycled Polyester
 - Moisture wicking and breathable
 - Inner shorts
 - Mesh fabric on back

111542 Mix Court Dress XS - XXL



111730 Court Loose Tank XS - XXL

● Sustainable choice

COMPOSITION
100% Polyester

- BENEFITS
- Made in 100% Recycled Polyester
 - Recycleable
 - Moisture wicking and breathable
 - UPF 50+
 - Loose fit

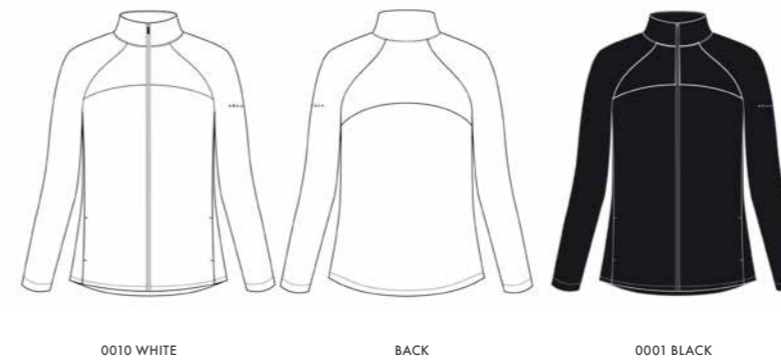


111550 Zip up Court Jacket XS - XXL

● Sustainable choice

COMPOSITION
90% Polyester
10% Elastane

- BENEFITS
- Made in 90% recycled polyester
 - Soft, stretchy and breathable fabric
 - Detail mesh fabric on front and back
 - Front zip with logo puller



111552 Solid Court Racerback XS - XXL

● Sustainable choice

COMPOSITION 1
87% Polyester
13% Elastane

- BENEFITS
- Made in 87% Recycled Polyester
 - Moisture wicking and breathable
 - Elastic bindings
 - Pocket at back



111394 Bounce Shorts XS - XXL

● Sustainable choice

COMPOSITION 1
95% Polyester
5% Elastane

COMPOSITION 2
82% Polyester
18% Elastane

INSEAM
12 cm (Size M)

- BENEFITS
- Lightweight woven fabric
 - Inner shorts made in 80% Recycled polyamide
 - One sidepocket at innershorts
 - 2-way stretch
 - Logo print at side



111553 Bounce Pleated Skort XS - XXL

● Sustainable choice



0001 BLACK

BACK

S115 WOOD

COMPOSITION 1
95% Polyester
5% Elastane

COMPOSITION 2
82% Polyester
18% Elastane

BACK LENGTH:
35 cm (Size M)

BENEFITS

- Pleated lightweight woven fabric in 95% recycled polyester
- 2-way stretch
- Inner shorts in 82% recycled polyester
- Soft tricot fabric in 4-way stretch
- One sidepocket at innershorts
- Logo print

111563 Court Jersey Skort XS - XXL

● Sustainable choice



0001 BLACK

BACK

0010 WHITE

S408 PINK CARNATION

COMPOSITION
89% Polyester
11% Elastane

LENGTH:
41 cm (Size M)

BENEFITS

- Made in 89% Recycled Polyester
- Moisture wicking breathable jersey fabric
- Inner shorts with pocket
- Regular fit

111600 Court Bike Tights XS - XXL

● Sustainable choice



0001 BLACK

BACK

SIDE

COMPOSITION
77% Polyester
23% Elastane

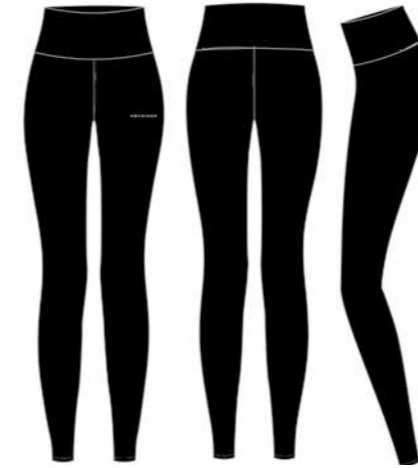
INSEAM
21 cm (Size M)

BENEFITS

- Made in 87% recycled polyamide
- Soft and comfortable
- Breathable and moisture wicking fabric
- External ball pocket at back of waist
- Adjustable drawstring at waist
- Röhnisch logo at front
- High waist

111601 Court High Waist Tights XS - XXL

● Sustainable choice



0001 BLACK

BACK

SIDE

COMPOSITION
77% Polyester
23% Elastane

INSEAM:
64,5 cm (Size M)

BENEFITS

- Made in 87% recycled polyamide
- Soft and comfortable
- Breathable and moisture wicking fabric
- External ball pocket at back of waist
- Adjustable drawstring at waist
- Röhnisch logo at front
- High waist

Color Stories⁰⁸



111739 POM RIB BEANIE



111747 BRAIDED STRETCH BELT



111737 SPORTY POM BEANIE



111785 SEION SOFT CAP



111739 POM RIB BEANIE



111785 SEION SOFT CAP



111779 AVALON JACKET



111670 ANGEL KNIT SWEATER



111669 ADELE KNITTED SWEATER



111696 JOLINE PILE VEST



111285 FORCE HOOD JACKET



111671 ANGEL JACQUARD KNIT



111666 EIRA THERMAL TOP



111778 AVALON VEST



110752 SIA POLOSHIRT



111251 HAILEY POLO



111251 HAILEY POLO



111688 MIRIAM LONG SLEEVE POLOSHIRT



110739 LEXI PANTS



111777 JESS PANTS



110740 INSULATE PANTS



111777 JESS PANTS



111661 FORCE PADDED SKIRT



111682 JESS YARNDYE PANTS



111785 SEION SOFT CAP



111335 BUCKET HAT



118060 QUILTED WARM CAP



111737 SPORTY POM BEANIE



111785 SEION SOFT CAP



111414 SUN PROTECTION VISOR



111692 ANNE JACQUARD SWEATER



111778 AVALON VEST



111679 POLAR FLEECE



111241 LEAH WIND CARDIGAN



1111506 ANNE KNITTED SWEATER



111668 ADELE KNITTED SWEATER



111688 MIRIAM LONG SLEEVE POLOSHIRT



111688 MIRIAM LONG SLEEVE POLOSHIRT



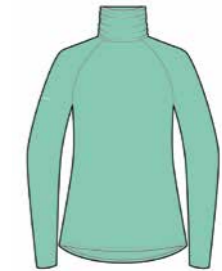
111251 HAILEY POLO



111517 ADDY LONG SLEEVE



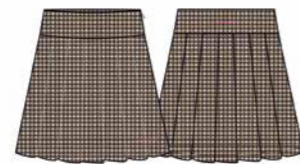
111688 MIRIAM LONG SLEEVE POLOSHIRT



111251 HAILEY POLO



110740 INSULATE PANTS



111961 LILY MID PLEAT SKORT



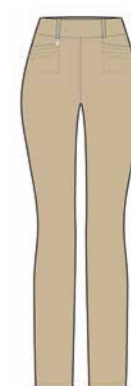
111682 JESS YARNDYE PANTS



110740 INSULATE PANTS



111250 JESS PANTS



110571 EMBRACE PANTS



111739 POM RIB BEANIE



111785 SEION SOFT CAP



111785 SEION SOFT CAP



111739 POM RIB BEANIE



111785 SEION SOFT CAP



111785 SEION SOFT CAP



111672 CLOUD PILE HALF ZIP



111779 AVALON JACKET



111778 AVALON VEST



111778 AVALON JACKET



111654 FROSTY QUILT VEST



111778 AVALON VEST



111251 HAILEY POLO



111517 ADDY LONG SLEEVE



111688 MIRIAM LONG SLEEVE POLOSHIRT



110752 SIA POLOSHIRT



111666 EIRA THERMO TOP



111283 ELLE POLO



110739 LEXI PANTS



111250 JESS PANTS



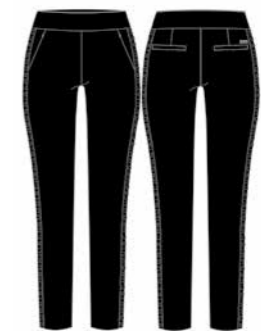
111661 FORCE PADDED SKIRT



110740 INSULATE PANTS



111250 JESS PANTS



111478 KAY GOLF PANTS



111749 RAINY HAT



111541 JERSEY NECKWARMER



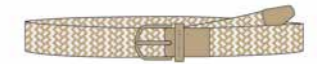
111785 SEION SOFT CAP



111784 AMAL ELASTIC BELT



111739 POM RIB BEANIE



111747 BRAIDED STRETCH BELT



111680 HURRICANE JACKET



111779 AVALON JACKET



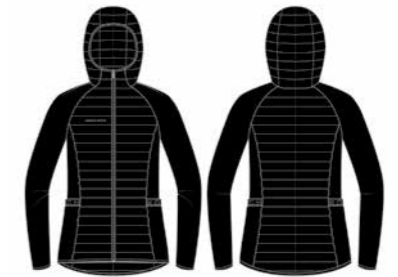
111778 AVALON VEST



111665 BLAZE CARDIGAN



111670 ANGEL KNIT SWEATER



111285 FORCE HOOD JACKET



110581 STORM RAIN JACKET



110752 SIA POLOSHIRT



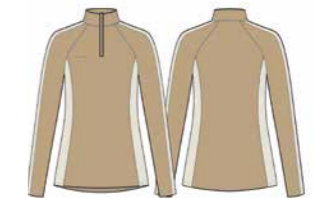
111666 EIRA THERMO TOP



111688 MIRIAM LONG SLEEVE POLOSHIRT



110735 FORCE VEST



111678 SKYLER HALF ZIP



110597 STORM RAIN PANTS



110740 INSULATE PANTS



110739 LEXI PANTS



110739 LEXI PANTS



111661 FORCE PADDED SKIRT



111490 CHIE PANTS



111739 POM RIB BEANIE



111737 SPORTY POM BEANIE



111785 SEION SOFT CAP



111653 FROSTY QUILT JACKET



110735 FORCE VEST



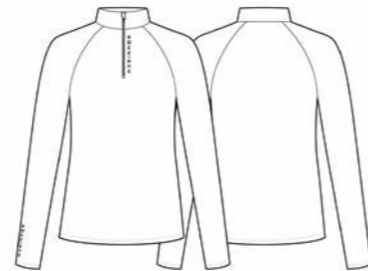
111657 JOLINE PILE JACKET



111283 ELLE POLO



110729 ALLY BASE TOP



111517 ADDY LONG SLEEVE



110739 LEXI PANTS



111250 JESS PANTS



111682 JESS YARNDYE PANTS



110680 LOGO SUN VISOR



111414 SUN PROTECTION VISOR



111139 TENI HAT



111785 SEION SOFT CAP



110680 LOGO SUN VISOR



111414 SUN PROTECTION VISOR



111286 ABBY SLEEVELESS TOP



111500 ABBY POLOSHIRT



111695 CORINNE STRIPED POLOSHIRT



111286 ABBY SLEEVELESS TOP



111517 ADDY LONG SLEEVE



111693 BETSY POLOSHIRT



111691 TALIA SLEEVELESS TOP



111681 AMY REGULAR SKORT



111770 ADDY PRINTEDLONG SLEEVE



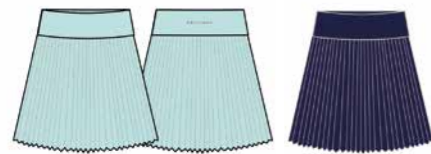
111691 TALIA SLEEVELESS TOP



111681 AMY REGULAR SKORT



111519 MIRIAM POLOSHIRT



111651 DAWN PLEAT SKORT



111288 ABBY SLEEVELESS DRESS
111715 IMEN WIND JACKET



111690 TALIA DRESS



111690 TALIA DRESS



111288 ABBY SLEEVELESS DRESS

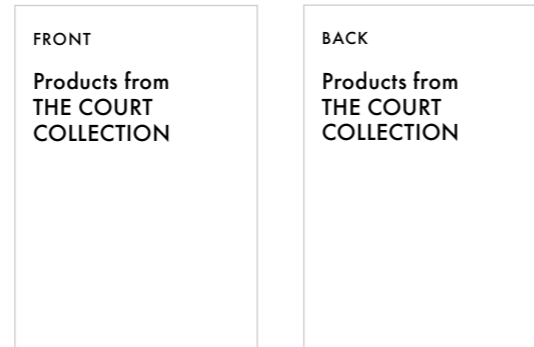


111681 AMY REGULAR SKORT

Marketing⁰⁹

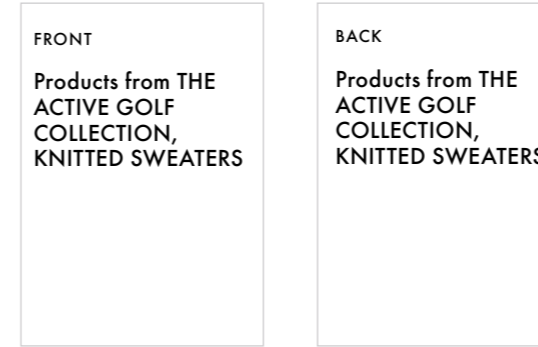
930320 Court Display A4

Price



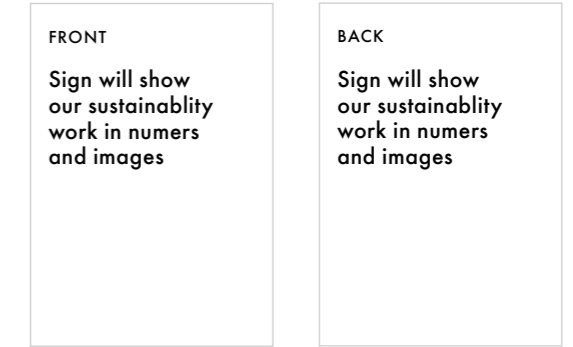
930319 Golf Display 5 A4

Price



930321 Golf Sustainable Display A4

Price



Double sides table and shelf display

Double sides table and shelf display

930315 Golf Display 1 A4

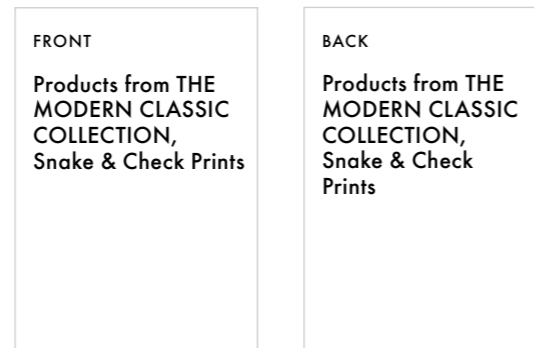
Price



Double sides table and shelf display

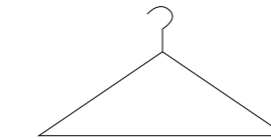
930316 Golf Display 2 A4

Price



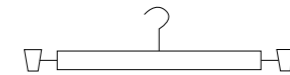
Double sides table and shelf display

930255 Clothing Hangers Top



Price

930256 Clothing Hangers Bottom



Price

930317 Golf Display 3 A4

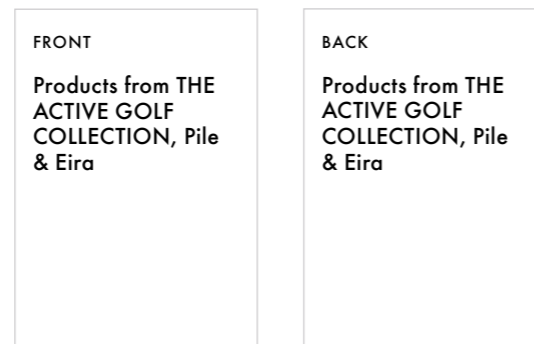
Price



Double sides table and shelf display

930318 Golf Display 4 A4

Price



Double sides table and shelf display

930248 Slatwall Logo Sign 60 X 40 CM

Price



Logosign in GLS for slatwall use

930249 Table Sign 24 X 14 CM

Price



Table sign in GLS for shelves and tables

Sustainability⁰⁹

2025 Goal & Vision: All our fabrics will be 100% sustainable.

Sustainable fabrics AW23: 91%

| Golf | | Active | | Outerwear | | Court | | Trekking | |
|--------------|-----|--------------|------|--------------|------|--------------|------|--------------|------|
| Tops | 87% | Tops | 100% | Outerwear | 100% | Court | 100% | Trekking | 100% |
| Bottoms | 80% | Jacket/Vest | 100% | | | | | | |
| | | Bottoms | 100% | | | | | | |
| | | Underwear | 90% | | | | | | |
| Total | | Total | | Total | | Total | | Total | |
| 85% | | 97% | | 100% | | 100% | | 100% | |

Accessories

| | |
|--------|-----|
| Golf | 79% |
| Active | 79% |

Total
79%

Sustainability

Active
83 out of 85 products
are a sustainable choice

Golf
63 out of 74 products
are a sustainable choice

Outerwear
11 out of 11 products are
a sustainable choice

Court
12 out of 12 products are
a sustainable choice

Trekking
19 out of 19 products are
a sustainable choice

Accessories
29 out of 37 products
are a sustainable choice

As far as we reached for AW23, Main Collection

- 97% on Active & Underwear (AW22, 89%)
- 85% on Golf (AW22, 83%)
- 100% on Outerwear (SS22, 100%)
- 100% on Court
- 100% on Trekking
- 79% on Accessories (AW22, 55%)

Sustainable and classified fabrics and treatments we use

- Recycled Polyester (from Pet)
- Recycled Polyamide (mainly from fishing net)
- Organic Cotton (cultured without chemicals and better for the farmers due to zero toxic)
- Recycleable products (that can be made into new garments)
- Biogradable products (that is biogradable by nature)

Decision taken by us as a company

- We do not use fur or leather
- We say no to "muelsing wool"
- We use RDS down standard
- We don't use antibacterial treatments (Biocides)
- Clever Care  The symbole will be found in all our garments)
- Hangtags in recycle paper and with soy based print
- We have recycled polyester in our shopping bags both Online & in store
- We are 100% Fluor Carbon free

AW23 Golf / Materials

CLOTHES AVERY PROGRAM

This season we have decided to replace the down in our Light down program with a functional "Fake down" polyester filling from THERMOLITE®.

THERMOLITE® EcoMade T-DOWN technology is made from 100% recycled PET bottles. This 500 fill power synthetic insulation offers several advantages over down: higher loft, better moisture resistance, warmer when wet, and dries faster. This technology is also breathable, soft and lofty with an excellent hand, and offers high compressibility (packable) with rapid recovery power (<https://www.thermolite.com/en/business/search-technologies/thermolite-ecomade-t-down-technology>)

The fabric and lining are made in 100% Recycled Polyamide and the zippers in 100% Recycled Polyester zippers. Flattering panels, cozy collar, and Lycra cuffs makes these products perfect for winter golf as well as everyday lifestyle.

STORM RAIN PROGRAM

Our waterproof products are made in high performance stretch fabric with biodegradable membrane backing. They are waterproof yet highly breathable. The waterproof garments are complete with taped seams and water-resistant zippers.

- Fluorocarbon-free
- Biodegradable membrane
- Soft, 2-way stretch fabric
- Windproof
- Breathable 10,000g/m2/24h
- Waterproof 10,000 mm
- Waterproof zippers
- Long zippers on pants

FORCE JACKET AND VEST

Stay warm during a chill day at the court in these styles with down filled panels and softshell fabric.

- Wind proof panels with woven channels that prevents down leaking.
- RDS down filling
- Softshell fabric with 3-layer function
- Wind and Water resistant
- Warming and soft fleece at inside of Softshell fabric
- Several pockets for your belongings

LEXI PANTS AND INSULATE PANTS

Don't let the cold weather stop you with these pants in our softshell fabric.

- Softshell fabric with 3-layer function
- Face side made in recycled polyester
- Wind and Water resistant
- Warming and soft fleece at inside
- Two-way stretch
- Pockets at front and back

JOLENE PILE

- Warming Pile fabric
- Wind stretch fabric on shoulder and yoke
- Made in 100% Recycled Polyester
- Zip Pockets
- Regular fit

SS23 Padel and Accessories / Materials

PADEL

Bounce Styles

- Lightweight woven fabric in 95% recycled polyester
- 2-way stretch
- Inner shorts in 82% recycled polyester
- Soft tricot fabric in 4-way stretch
- One sidepocket at innershorts
- Reflective Logo print at side

Bounce Lights

- Made in 87% Recycled Polyester
- Quick dry breathable fabric
- UPF 50+
- Regular fit

Court Tights

- Made in 77% recycled polyester
- Soft and comfortable
- Breathable and moisture wicking fabric
- External ball pocket at back of waist
- Adjustable drawstring at waist
- Röhnisch logo at front
- High waist

Jersey Skorts

- Made in 89% Recycled Polyester
- Moisture wicking breathable jersey fabric
- Inner shorts with pocket
- Regular fit

ACCESSORIES

Socks

- 70% Recycled Polyamide, 2% Elastane for best comfort
- Recycled yarn
- Breathable and moisture wicking yarn
- Light weight
- Reinforced heel and toe
- Arch support
- 2-pack

Bottles

- Metal water bottle for both warm and cold drinks.

Hats/Caps

- Using fabric from Golf collection for a good matching ability, mainly made in recycled polyesters and polyamides.

Size guide

RÖHNISCH SIZE CHARTS

| Size | XXS | XS | S | M | L | XL | 2XL | 3XL |
|-----------|-----|----|----|-----|-----|-----|-----|-----|
| Chest (A) | 76 | 82 | 88 | 94 | 100 | 108 | 116 | 124 |
| Waist (B) | 60 | 66 | 72 | 78 | 84 | 92 | 100 | 108 |
| Seat (C) | 84 | 90 | 96 | 102 | 108 | 115 | 122 | 129 |

| Size | 32 | 34 | 36 | 38 | 40 | 42 | 44 | 46 | 48 | 50 | 52 |
|-----------|----|----|----|----|-----|-----|-----|-----|-----|-----|-----|
| Chest (A) | 76 | 80 | 84 | 88 | 92 | 96 | 100 | 104 | 110 | 117 | 124 |
| Waist (B) | 60 | 64 | 68 | 72 | 76 | 80 | 84 | 88 | 95 | 102 | 109 |
| Seat (C) | 84 | 88 | 92 | 96 | 100 | 104 | 108 | 112 | 118 | 124 | 130 |

HOW TO MEASURE

A: Measure your chest at its FULLEST point.

B: Measure your waist at its SMALLEST point.

C: Measure your seat at its FULLEST point.

Röhnisch Sportswear AB
Rohnisch.com

ÖREBRO OFFICE

Post box 6116
700 06 Örebro, Sweden
Pappersbruksallén 2
702 15 Örebro, Sweden

ORDER PHONE

+46 (0)19-32 16 00

STOCKHOLM OFFICE

Virkesvägen 24,
8 floor, 120 30
Stockholm, Sweden.
+46 (0)19-32 16 00

RÖHNISCH